

# MORTAR COUPLING



Luxecasting  
International Group

CATALOG  
2022

0006.2022.v001



# 100 % On Site Production STAINLESS STEEL TW INVESTMENT CASTING PROCESS

Wax pattern



Sand blasting



Cut off & Grinding



Shot blasting



Assembly



## Technical Info

**Standard**

22and23.5

**Sizes**

DN25 up to DN50

**Materials**

CS

**Working Pressure**

50 bar

**Thread Type**

BSPP: EN ISO 228-1/DIN ISO 228-1

**Coupling Gaskets**

NBR (-30°C/+120°C)

**Applications**

to supply mortar, concrete or screed at pumps, spraying devices, plastering machines, etc.



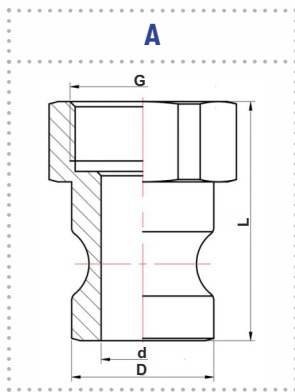
TUV Certified:



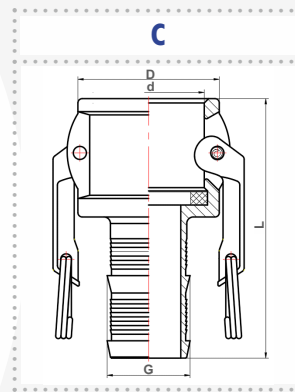
Safety  
Regular  
Production  
Surveillance



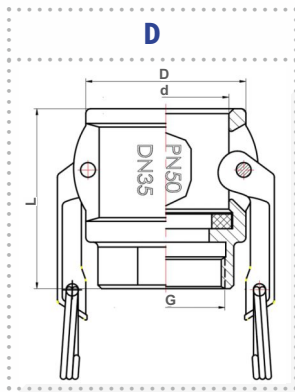
www.tuv.com  
ID 000082182



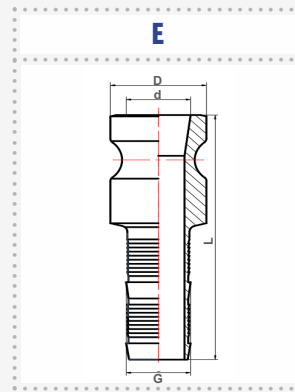
| Name A        | G       | D  | d  | L    |
|---------------|---------|----|----|------|
| DN25 - 1"     | G1"     | 41 | 24 | 66.5 |
| DN25 - 1 1/4" | G1 1/4" | 41 | 24 | 68.5 |
| DN35 - 1"     | G1"     | 50 | 33 | 68   |
| DN35 - 1 1/4" | G1 1/4" | 50 | 33 | 70   |
| DN35 - 1 1/2" | G1 1/2" | 50 | 33 | 70   |
| DN50 - 2"     | G2"     | 63 | 44 | 72   |
| DN50 - 2 1/2" | G2 1/2" | 63 | 44 | 73   |



| Name C      | G    | D    | d    | L     |
|-------------|------|------|------|-------|
| DN25 22mm   | 26.5 | 54   | 41.5 | 137.5 |
| DN35 22mm   | 38   | 64.8 | 51   | 119.5 |
| DN50 22mm   | 53   | 78   | 64   | 124.5 |
| DN35 23.5mm | 38   | 64.8 | 51   | 119.5 |
| DN50 23.5mm | 53   | 78   | 64   | 124.5 |



| Name D      | G       | D    | d    | L    |
|-------------|---------|------|------|------|
| DN25 22mm   | G1"     | 54   | 41.5 | 72.5 |
| DN35 22mm   | G1 1/4" | 64.8 | 51   | 73.5 |
| DN35 22mm   | G1 1/2" | 64   | 51   | 73.5 |
| DN50 22mm   | G2"     | 78   | 64   | 74.5 |
| DN25 23.5mm | G1"     | 54   | 41.5 | 72.5 |
| DN35 23.5mm | G1 1/4" | 64.8 | 51   | 73.5 |
| DN35 23.5mm | G1 1/2" | 64.8 | 35   | 73.5 |
| DN50 23.5mm | G2"     | 78   | 64   | 74.5 |



| Name E       | G    | D  | d    | L     |
|--------------|------|----|------|-------|
| DN25 22mm    | 26.8 | 41 | 27.5 | 120   |
| DN35 22mm    | 38   | 50 | 33   | 120   |
| DN50 22mm    | 53.5 | 63 | 42   | 144   |
| DN50-35 22mm | 38   | 63 | 48   | 122   |
| DN35-25 22mm | 27.5 | 50 | 33   | 121.5 |
| DN25 23.5mm  | 26.5 | 41 | 27.5 | 120.5 |
| DN35 23.5mm  | 38   | 50 | 33   | 120   |
| DN50 23.5mm  | 53   | 63 | 48   | 125   |



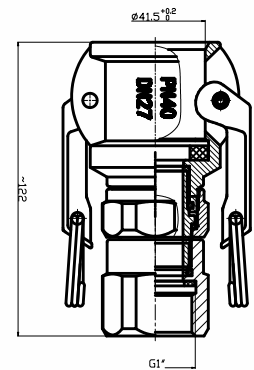


### Mortar Type D-swivel thread

| Name   | Inch | Code     | Weight | Material |
|--------|------|----------|--------|----------|
| MT-D25 | DN25 | L1003004 | -      | AL       |

### Mortar couplings with female thread

| Name      | Inch | Code     | Weight | Thread | Material |
|-----------|------|----------|--------|--------|----------|
| MT-D25    | DN25 | L1004002 | 0.65   | BSPP   | CS       |
| MT-D27    | DN27 | L1004003 | 0.77   | BSPP   | CS       |
| MT-D35/25 | DN35 | L1004004 | 0.70   | BSPP   | CS       |
| MT-D35/32 | DN35 | L1004005 | 0.77   | BSPP   | CS       |
| MT-D35/38 | DN35 | L1004001 | 0.73   | BSPP   | CS       |
| MT-D50    | DN50 | L1004010 | 0.99   | BSPP   | CS       |
| MTP-D50   | DN50 | L1004011 | X      | BSPP   | PP       |



### Male adapter with female thread

| Name      | Inch | Code     | Weight | Thread | Material |
|-----------|------|----------|--------|--------|----------|
| MT-A25    | DN25 | L1001001 | 0.28   | BSPP   | CS       |
| MT-A27    | DN27 | L1001002 | 0.52   | BSPP   | CS       |
| MT-A27/32 | DN27 | L1001003 | 0.46   | BSPP   | CS       |
| MT-A35/25 | DN35 | L1001004 | 0.58   | BSPP   | CS       |
| MT-A35/32 | DN35 | L1001005 | 0.70   | BSPP   | CS       |
| MT-A35    | DN35 | L1001006 | 0.68   | BSPP   | CS       |
| MT-A50    | DN50 | L1001007 | 0.62   | BSPP   | CS       |
| MT-A50/65 | DN50 | L1001008 | 1.00   | BSPP   | CS       |



### Male adapter on both ends reduced

| Name       | Inch      | Code     | Material |
|------------|-----------|----------|----------|
| MT-A25/A25 | DN25/DN25 | L1002001 | CS       |
| MT-A35/A35 | DN35/DN35 | L1002002 | CS       |
| MT-A35/A25 | DN35/DN25 | L1002003 | CS       |
| MT-A35/A25 | DN35/DN25 | L1002004 | CS       |
| MT-A50/A25 | DN50/DN25 | L1002005 | CS       |
| MT-A35/A35 | DN35/DN35 | L1002006 | CS       |
| MT-A50/A25 | DN50/DN25 | L1002007 | CS       |
| MT-A50/A35 | DN50/DN35 | L1002008 | CS       |
| MT-A50/A35 | DN50/DN35 | L1002009 | CS       |





## Female adapter with hose stem

| Name      | Inch | Code     | Weight | Material |
|-----------|------|----------|--------|----------|
| MT-C25    | DN25 | L1003008 | 0.48   | CS       |
| MT-C35    | DN35 | L1003002 | 0.8    | CS       |
| MT-C35/42 | DN35 | L1003009 | 0.97   | CS       |
| MT-C50/42 | DN50 | L1003010 | 1.2    | CS       |
| MT-C50    | DN50 | L1003003 | 1.25   | CS       |

## Female adapter with hose stem and collar



| Name      | Inch | Code     | Weight | Material |
|-----------|------|----------|--------|----------|
| MT-C25    | DN25 | L1003011 | 0.48   | CS       |
| MT-C27/25 | DN27 | L1003012 | -      | CS       |
| MT-C35    | DN35 | L1003013 | 0.8    | CS       |
| MT-C35/42 | DN35 | L1003014 | 0.97   | CS       |
| MT-C50/42 | DN50 | L1003015 | 1.2    | CS       |
| MT-C50    | DN50 | L1003016 | 1.25   | CS       |

## Male adapter with hose stem



| Name      | Inch | Code     | Weight | Material |
|-----------|------|----------|--------|----------|
| MT-E25    | DN25 | L1005002 | 0.48   | CS       |
| MT-E27    | DN27 | L1005003 | 0.55   | CS       |
| MT-E35/25 | DN35 | L1005006 | 0.8    | CS       |
| MT-E35    | DN35 | L1005001 | 0.83   | CS       |
| MT-E35/42 | DN35 | L1005007 | 0.9    | CS       |
| MT-E50/35 | DN50 | L1005008 | 1.20   | CS       |
| MT-E50/42 | DN50 | L1005009 | 1.25   | CS       |
| MT-E50    | DN50 | L1005004 | 1.30   | CS       |

## Male adapter with hose stem and collar



| Name      | Inch | Code     | Weight | Material |
|-----------|------|----------|--------|----------|
| MT-E25    | DN25 | L1005010 | 0.48   | CS       |
| MT-E27    | DN27 | L1005011 | 0.55   | CS       |
| MT-E35/25 | DN35 | L1005012 | 0.8    | CS       |
| MT-E35    | DN35 | L1005013 | 0.83   | CS       |
| MT-E35/42 | DN35 | L1005014 | 0.9    | CS       |
| MT-E50/35 | DN50 | L1005015 | 1.20   | CS       |
| MT-E50/42 | DN50 | L1005016 | 1.25   | CS       |
| MT-E50    | DN50 | L1005017 | 1.30   | CS       |



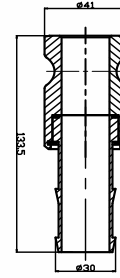


## Type-E Mortar Coupling

| Name   | Inch | Code     | Weight | Material |
|--------|------|----------|--------|----------|
| E25-30 | DN30 | L1005019 | -      | CS       |

## Crimping sockets

| Name   | Size | Code     | Weight | Material |
|--------|------|----------|--------|----------|
| MTFR19 | 19*6 | L1014005 | 0.125  | CS       |
| MTFR25 | 25*7 | L1014002 | 0.121  | CS       |
| MTFR35 | 35*7 | L1014003 | 0.218  | CS       |
| MTFR38 | 38*7 | L1014006 | 0.223  | CS       |
| MTFR42 | 42*7 | L1014007 | 0.246  | CS       |
| MTFR50 | 50*7 | L1014001 | 0.497  | CS       |



## Parts

| Name | Code     | Material |
|------|----------|----------|
| DN50 | L9001658 | CS       |



## SQUARE SEAL-NBR

| Name | Size   | Code     | OD   | ID   | Colour | Material |
|------|--------|----------|------|------|--------|----------|
| DN15 | 1/2"   | L1090017 | 36.5 | 17.5 | Black  | NBR      |
| DN20 | 3/4"   | L1090076 | 35   | 22   | Black  | NBR      |
| DN25 | 1"     | L1090077 | 40   | 27   | Black  | NBR      |
| DN32 | 1 1/4" | L1090078 | 50   | 35   | Black  | NBR      |
| DN40 | 1 1/2" | L1090079 | 56   | 41   | Black  | NBR      |
| DN50 | 2"     | L1090080 | 67   | 51   | Black  | NBR      |



## SQUARE SEAL-EPDM

| Name | Size   | Code     | OD   | ID   | Colour | Material |
|------|--------|----------|------|------|--------|----------|
| DN15 | 1/2"   | L1090099 | 36.5 | 17.5 | Black  | EPDM     |
| DN20 | 3/4"   | L1090100 | 35   | 22   | Black  | EPDM     |
| DN25 | 1"     | L1090101 | 40   | 27   | Black  | EPDM     |
| DN32 | 1 1/4" | L1090102 | 50   | 35   | Black  | EPDM     |
| DN40 | 1 1/2" | L1090103 | 56   | 41   | Black  | EPDM     |
| DN50 | 2"     | L1090104 | 67   | 51   | Black  | EPDM     |





## Luxecasting International Group

**Luxecasting Machinery Co., Ltd**  
G320 New Century Industrial Park  
Gao'an City, Yichun, Jiangxi 330800, China

 +86 795 7066681

 [info@luxecasting.com](mailto:info@luxecasting.com)

**Luxecasting Europe GmbH**  
Emil-Beeril-Str.17  
D-40822 Mettmann, Germany

 +49 (0) 21045 0839 21

 [info.europe@luxecasting.com](mailto:info.europe@luxecasting.com)

**Luxecasting Germany GmbH**  
Elisabethstrasse 51  
D-32791 Lage, Germany

 +49 (0) 5232 9226 0

 [info.germany@luxecasting.com](mailto:info.germany@luxecasting.com)

**Luxecasting Poland Bodtech Sp. z o.o.**  
ul. Mszańska 1a  
44-304 Wodzisław Śląski, Polska

 +48 503 834 570

 [info.poland@luxecasting.com](mailto:info.poland@luxecasting.com)